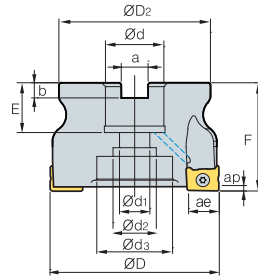
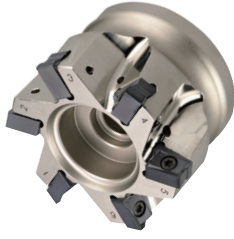


RM4ZC(M)3000/4000



Designation	齿数	ØD	ØD2	Ød	Ød1	Ød2	Ød3	a	b	E	F	ap	ae	kg	
RM4ZCM	3040HR	4	40	37	16	9	14	-	8.4	5.6	19	40	1.5	9.0	0.21
	3050HR	5	50	47	22	11	18	-	10.4	6.3	20	40	1.5	9.0	0.33
	3052HR	5	52	48	22	11	18	-	10.4	6.3	20	40	1.5	9.0	0.37
	4063HR	5	63	58	22	11	18	-	10.4	6.3	20	40	2.5	14.0	0.56
RM4ZC (RM4ZCM)	4066HR	5	66	61	25.4 (27)	14	20	-	9.5 (12.4)	6 (7)	25	50	2.5	14.0	0.74
	4080HR	6	80	70	25.4 (27)	14	20	35	9.5 (12.4)	6 (7)	25 (23)	50	2.5	14.0	1.09
	4100HR	7	100	80	31.75 (32)	18	26	42	12.7 (14.4)	8 (8)	25 (33)	63 (50)	2.5	14.0	1.71

() Metric size

Available inserts

LNM(E)X-MM



Designation	Cermet		Coated											Uncoated			page	
	CN2000	CN30	NCM325	NC5330	NCM535	NCM545	PC2505	PC2010	PC3600	PC3700	PC6510	PC9530	PC9540	PC5300	PC5400	ST30A		G10
3000 type	LNEX	100605PNL-MM									●			●	●			
	LNMX	100605PNL-MM							●	●	●			●	●			
4000 type	LNEX	151008PNL-MM									●			●	●			
	LNMX	151008PNL-MM							●					●	●			

Available arbors

Designation	Available arbors	
	RM4ZC	RM4ZCM
RM4ZCM	3040HR 3050HR 3052HR	BT□□-FMC16-□□ BT□□-SCA16-□□
		BT□□-FMC22-□□
		BT□□-FMC22-□□
RM4ZCM RM4ZC(M)	4063HR 4066HR 4080HR 4100HR	BT□□-FMA25.4-□□
		BT□□-FMA31.75-□□ BT□□-SCA31.75-□□
		BT□□-FMC27-□□ BT□□-FMC32-□□

Parts

Specification	Screw	Wrench
Ø40~Ø52	FTKA0307	TW09S
Ø63~Ø100	FTKA0412B	TW15S

Available inserts E11 Available arbors and bolt E400~E402

